

HIGHLIGHTS OF PRESCRIBING INFORMATION

These highlights do not include all the information needed to use ZIOPTAN® (tafluprost ophthalmic solution) 0.0015% safely and effectively. See full prescribing information for ZIOPTAN®.

ZIOPTAN® (tafluprost ophthalmic solution) 0.0015%
Initial U.S. Approval: 2012

INDICATIONS AND USAGE

ZIOPTAN® (tafluprost ophthalmic solution) 0.0015% is a prostaglandin analog indicated for reducing elevated intraocular pressure in patients with open-angle glaucoma or ocular hypertension. (1)

DOSAGE AND ADMINISTRATION

One drop in the affected eye(s) once daily in the evening. (2)

DOSAGE FORMS AND STRENGTHS

Ophthalmic solution containing tafluprost 0.015 mg/mL. (3)

CONTRAINDICATIONS

None. (4)

WARNINGS AND PRECAUTIONS

Pigmentation
Pigmentation of the iris, periorbital tissue (eyelid) and eyelashes can occur. Iris pigmentation is likely to be permanent. (5.1)

Eyelash Changes
Gradual changes to eyelashes including increased length, thickness and number of lashes. Usually reversible. (5.2)

ADVERSE REACTIONS

Most common ocular adverse reaction is conjunctival hyperemia (range 4% – 20%). (6.1)

To report SUSPECTED ADVERSE REACTIONS, contact Akorn Inc. at 1-800-932-5676 or FDA at 1-800-FDA-1088 or www.fda.gov/medwatch.

USE IN SPECIFIC POPULATIONS

Use in pediatric patients is not recommended because of potential safety concerns related to increased pigmentation following long-term chronic use. (8.4)

See 17 for PATIENT COUNSELING INFORMATION and FDA-approved patient labeling.

Revised: 08/2014

FULL PRESCRIBING INFORMATION: CONTENTS*

1	INDICATIONS AND USAGE
2	DOSAGE AND ADMINISTRATION
3	DOSAGE FORMS AND STRENGTHS
4	CONTRAINDICATIONS
5	WARNINGS AND PRECAUTIONS
5.1	Pigmentation
5.2	Eyelash Changes
5.3	Intraocular Inflammation
5.4	Macular Edema
6	ADVERSE REACTIONS
6.1	Clinical Studies Experience
6.2	Postmarketing Experience
8	USE IN SPECIFIC POPULATIONS
8.1	Pregnancy
8.3	Nursing Mothers
8.4	Pediatric Use
8.5	Geriatric Use

11	DESCRIPTION
12	CLINICAL PHARMACOLOGY
12.1	Mechanism of Action
12.3	Pharmacokinetics
13	NONCLINICAL TOXICOLOGY
13.1	Carcinogenesis, Mutagenesis, Impairment of Fertility
14	CLINICAL STUDIES
16	HOW SUPPLIED/STORAGE AND HANDLING
17	PATIENT COUNSELING INFORMATION
17.1	Nightly Application
17.2	Handling the Single-Use Container
17.3	Potential for Pigmentation
17.4	Potential for Eyelash Changes
17.5	When to Seek Physician Advice
17.6	Use with Other Ophthalmic Drugs
17.7	Storage Information

*Sections or subsections omitted from the full prescribing information are not listed.

FULL PRESCRIBING INFORMATION

1 INDICATIONS AND USAGE

ZIOPTAN® (tafluprost ophthalmic solution) 0.0015% is indicated for reducing elevated intraocular pressure in patients with open-angle glaucoma or ocular hypertension.

2 DOSAGE AND ADMINISTRATION

The recommended dose is one drop of ZIOPTAN® in the conjunctival sac of the affected eye(s) once daily in the evening.

The dose should not exceed once daily since it has been shown that more frequent administration of prostaglandin analogs may lessen the intraocular pressure lowering effect.

Reduction of the intraocular pressure starts approximately 2 to 4 hours after the first administration with the maximum effect reached after 12 hours.

ZIOPTAN® may be used concomitantly with other topical ophthalmic drug products to lower intraocular pressure. If more than one topical ophthalmic product is being used, each one should be administered at least 5 minutes apart.

The solution from one individual unit is to be used immediately after opening for administration to one or both eyes. Since sterility cannot be maintained after the individual unit is opened, the remaining contents should be discarded immediately after administration.

3 DOSAGE FORMS AND STRENGTHS

Ophthalmic solution containing tafluprost 0.015 mg/mL.

4 CONTRAINDICATIONS

None.

5 WARNINGS AND PRECAUTIONS

5.1 Pigmentation

Tafluprost ophthalmic solution has been reported to cause changes to pigmented tissues. The most frequently reported changes have been increased pigmentation of the iris, periorbital tissue (eyelid) and eyelashes. Pigmentation is expected to increase as long as tafluprost is administered. The pigmentation change is due to increased melanin content in the melanocytes rather than to an increase in the number of melanocytes. After discontinuation of tafluprost, pigmentation of the iris is likely to be permanent, while pigmentation of the periorbital tissue and eyelash changes have been reported to be reversible in some patients. Patients who receive treatment should be informed of the possibility of increased pigmentation. The long term effects of increased pigmentation are not known.

Iris color change may not be noticeable for several months to years. Typically, the brown pigmentation around the pupil spreads concentrically towards the periphery of the iris and the entire iris or parts of the iris become more brownish. Neither nevi nor freckles of the iris appear to be affected by treatment. While treatment with ZIOPTAN® can be continued in patients who develop noticeably increased iris pigmentation, these patients should be examined regularly. [See *Patient Counseling Information (17.3)*].

5.2 Eyelash Changes

ZIOPTAN® may gradually change eyelashes and vellus hair in the treated eye. These changes include increased length, color, thickness, shape and number of lashes. Eyelash changes are usually reversible upon discontinuation of treatment.

5.3 Intraocular Inflammation

ZIOPTAN® should be used with caution in patients with active intraocular inflammation (e.g., iritis/uveitis) because the inflammation may be exacerbated.

5.4 Macular Edema

Macular edema, including cystoid macular edema, has been reported during treatment with prostaglandin F_{2α} analogs. ZIOPTAN® should be used with caution in aphakic patients, in pseudophakic patients with a torn posterior lens capsule, or in patients with known risk factors for macular edema.

6 ADVERSE REACTIONS

6.1 Clinical Studies Experience

Because clinical studies are conducted under widely varying conditions, adverse reaction rates observed in the clinical studies of a drug cannot be directly compared to rates in the clinical studies of another drug and may not reflect the rates observed in practice.

Preservative-containing or preservative-free tafluprost 0.0015% was evaluated in 905 patients in five controlled clinical studies of up to 24-months duration. The most common adverse reaction observed in patients treated with tafluprost was conjunctival hyperemia which was reported in a range of 4% to 20% of patients. Approximately 1% of patients discontinued therapy due to ocular adverse reactions.

Ocular adverse reactions reported at an incidence of ≥ 2% in these clinical studies included ocular stinging/irritation (7%), ocular pruritus including allergic conjunctivitis (5%), cataract (3%), dry eye (3%), ocular pain (3%), eyelash darkening (2%), growth of eyelashes (2%) and vision blurred (2%).

Nonocular adverse reactions reported at an incidence of 2% to 6% in these clinical studies in patients treated with tafluprost 0.0015% were headache (6%), common cold (4%), cough (3%) and urinary tract infection (2%).

6.2 Postmarketing Experience

The following adverse reactions have been identified during postapproval use of tafluprost. Because postapproval adverse reactions are reported voluntarily from a population of uncertain size, it is not always possible to reliably estimate their frequency or establish a causal relationship to drug exposure.

Respiratory disorders: exacerbation of asthma, dyspnea

Eye disorders: iritis/uveitis

In postmarketing use with prostaglandin analogs, periorbital and lid changes including deepening of the eyelid sulcus have been observed.

8 USE IN SPECIFIC POPULATIONS

8.1 Pregnancy

Pregnancy Category C.

Teratogenic effects: In embryo-fetal development studies in rats and rabbits, tafluprost administered intravenously was teratogenic. Tafluprost caused increases in post-implantation losses in rats and rabbits and reductions in fetal body weights in rats. Tafluprost also increased the incidence of vertebral skeletal abnormalities in rats and the incidence of skull, brain and spine malformations in rabbits. In rats, there were no adverse effects on embryo-fetal development at a dose of 3 mcg/kg/day corresponding to maternal plasma levels of tafluprost acid that were 343 times the maximum clinical exposure based on C_{max} . In rabbits, effects were seen at a tafluprost dose of 0.03 mcg/kg/day corresponding to maternal plasma levels of tafluprost acid during organogenesis that were approximately 5 times higher than the clinical exposure based on C_{max} . At the no-effect dose in rabbits (0.01 mcg/kg/day), maternal plasma levels of tafluprost acid were below the lower level of quantification (20 pg/mL).

In a pre- and postnatal development study in rats, increased mortality of newborns, decreased body weights and delayed pinna unfolding were observed in offsprings. The no observed adverse effect level was at a tafluprost intravenous dose of 0.3 mcg/kg/day which is greater than 3 times the maximum recommended clinical dose based on body surface area comparison.

There are no adequate and well-controlled studies in pregnant woman. Although animal reproduction studies are not always predictive of human response, ZIOPTAN should not be used during pregnancy unless the potential benefit justifies the potential risk to the fetus.

Women of childbearing age/potential should have adequate contraceptive measures in place.

8.3 Nursing Mothers

A study in lactating rats demonstrated that radio-labeled tafluprost and/or its metabolites were excreted in milk. It is not known whether this drug or its metabolites are excreted in human milk. Because many drugs are excreted in human milk, caution should be exercised when ZIOPTAN[®] is administered to a nursing woman.

8.4 Pediatric Use

Use in pediatric patients is not recommended because of potential safety concerns related to increased pigmentation following long-term chronic use.

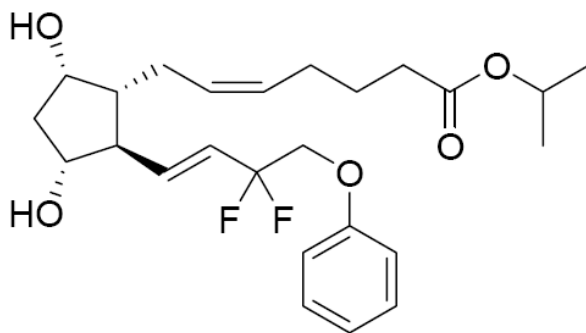
8.5 Geriatric Use

No overall clinical differences in safety or effectiveness have been observed between elderly and other adult patients.

11 DESCRIPTION

Tafluprost is a fluorinated analog of prostaglandin F_{2α}. The chemical name for tafluprost is 1-methylethyl (5Z)-7-{{(1R, 2R, 3R, 5S)-2-[(1E)-3,3-difluoro-4-phenoxy-1-butenyl]-3,5-dihydroxycyclopentyl]-5-heptenoate. The molecular formula of tafluprost is C₂₅H₃₄F₂O₅ and its molecular weight is 452.53.

Its structural formula is:



Tafluprost is a colorless to light yellow viscous liquid that is practically insoluble in water.

ZIOPTAN® (tafluprost ophthalmic solution) 0.0015% is supplied as a sterile solution of tafluprost with a pH range of 5.5 to 6.7 and an Osmolality range of 260 to 300 mOsmol/kg.

ZIOPTAN® contains Active: tafluprost 0.015 mg/mL; Inactives: glycerol, sodium dihydrogen phosphate dihydrate, disodium edetate, polysorbate 80, hydrochloric acid and/or sodium hydroxide (to adjust pH) and Water for Injection.

ZIOPTAN® does not contain a preservative.

12 CLINICAL PHARMACOLOGY

12.1 Mechanism of Action

Tafluprost acid, a prostaglandin analog is a selective FP prostanoid receptor agonist which is believed to reduce intraocular pressure by increasing uveoscleral outflow. The exact mechanism of action is unknown at this time.

12.3 Pharmacokinetics

Absorption

Following instillation, tafluprost is absorbed through the cornea and is hydrolyzed to the biologically active acid metabolite, tafluprost acid. Following instillation of one drop of the 0.0015% solution once daily into each eye of healthy volunteers, the plasma concentrations of tafluprost acid peaked at a median time of 10 minutes on both Days 1 and 8. The mean plasma C_{max} of tafluprost acid were 26 pg/mL and 27 pg/mL on Day 1, and Day 8, respectively. The mean plasma AUC estimates of tafluprost acid were 394 pg*min/mL and 432 pg*min/mL on Day 1 and 8, respectively.

Metabolism

Tafluprost, an ester prodrug, is hydrolyzed to its biologically active acid metabolite in the eye. The acid metabolite is further metabolized via fatty acid β -oxidation and phase II conjugation.

Elimination

Mean plasma tafluprost acid concentrations were below the limit of quantification of the bioanalytical assay (10 pg/mL) at 30 minutes following topical ocular administration of tafluprost 0.0015% ophthalmic solution.

13 NONCLINICAL TOXICOLOGY

13.1 Carcinogenesis, Mutagenesis, Impairment of Fertility

Tafluprost was not carcinogenic when administered subcutaneously daily for 24 months at doses up to 30 mcg/kg/day in rats and for 18 months at doses up to 100 mcg/kg/day in mice (over 1600 and 1300 times, respectively, the maximum clinical exposure based on plasma AUC).

Tafluprost was not mutagenic or clastogenic in a battery of genetic toxicology studies, including an *in vitro* microbial mutagenesis assay, an *in vitro* chromosomal aberration assay in Chinese hamster lung cells, and an *in vivo* mouse micronucleus assay in bone marrow.

In rats, no adverse effects on mating performance or fertility were observed with intravenous dosing of tafluprost at a dose of 100 mcg/kg/day (over 14000 times the maximum clinical exposure based on plasma C_{max} or over 3600 times based on plasma AUC).

14 CLINICAL STUDIES

In clinical studies up to 24 months in duration, patients with open-angle glaucoma or ocular hypertension and baseline pressure of 23 to 26 mm Hg who were treated with ZIOPTAN[®] dosed once daily in the evening demonstrated reductions in intraocular pressure at 3 and 6 months of 6 to 8 mmHg and 5 to 8 mmHg, respectively.

16 HOW SUPPLIED/STORAGE AND HANDLING

ZIOPTAN[®] (tafluprost ophthalmic solution) 0.0015% is supplied as a sterile solution in translucent low density polyethylene single-use containers packaged in foil pouches (10 single-use containers per pouch). Each single-use container has 0.3 mL solution corresponding to 0.0045 mg tafluprost.

NDC 17478-609-30; Unit-of-Use Carton of 30.

NDC 17478-609-90; Unit-of-Use Carton of 90.

Storage:

Store refrigerated at 2° to 8°C (36° to 46°F). During shipment ZIOPTAN[®] may be maintained at temperatures up to 40°C (104°F) for a period not exceeding 2 days. Mail-order prescriptions received after two days of the dispensing date noted on the prescribing label should not be used. Store in the original pouch. After the pouch is opened, the single-use containers may be stored in the opened foil pouch for up to 30 days at room temperature 20° to 25°C (68° to 77°F). Protect from moisture. Write down the date you open the foil pouch in the space provided on the pouch. Discard any unused containers 30 days after first opening the pouch.

17 PATIENT COUNSELING INFORMATION

See FDA-Approved Patient Labeling (Patient Information).

17.1 Nightly Application

Advise patients to not exceed once daily dosing since more frequent administration may decrease the intraocular pressure lowering effect of ZIOPTAN[®].

17.2 Handling the Single-Use Container

Advise patients that ZIOPTAN[®] is a sterile solution that does not contain a preservative. The solution from one individual unit is to be used immediately after opening for administration to one or both eyes. Since sterility cannot be maintained after the individual unit is opened, the remaining contents should be discarded immediately after administration.

17.3 Potential for Pigmentation

Advise patients about the potential for increased brown pigmentation of the iris, which may be permanent. Also inform patients about the possibility of eyelid skin darkening, which may be reversible after discontinuation of ZIOPTAN[®].

17.4 Potential for Eyelash Changes

Inform patients of the possibility of eyelash and vellus hair changes in the treated eye during treatment with ZIOPTAN[®]. These changes may result in a disparity between eyes in length, thickness, pigmentation, number of eyelashes or vellus hairs, and/or direction of eyelash growth. Eyelash changes are usually reversible upon discontinuation of treatment.

17.5 When to Seek Physician Advice

Advise patients that if they develop a new ocular condition (e.g., trauma or infection), experience a sudden decrease in visual acuity, have ocular surgery, or develop any ocular reactions, particularly conjunctivitis and eyelid reactions, they should immediately seek their physician's advice concerning the continued use of ZIOPTAN[®].

17.6 Use with Other Ophthalmic Drugs

If more than one topical ophthalmic drug is being used, the drugs should be administered at least five (5) minutes between applications.

17.7 Storage Information

Instruct patients on proper storage of cartons, unopened foil pouches, and opened foil pouches [see *How Supplied/Storage and Handling (16)*]. Recommended storage for cartons and unopened foil pouches is to store refrigerated at 2° to 8°C (36° to 46°F). After the pouch is opened, the single-use containers may be stored in the opened foil pouch for up to 28 days at room temperature 20° to 25°C (68° to 77°F). Protect from moisture.



Distributed by: **Akorn, Inc.**

Manufactured for: **Oak Pharmaceuticals, Inc.**

Made in France

The ZIOPTAN trademark is owned by Merck Sharp & Dohme Corp. and is used under license.

ZO00N Rev. 08/14

PATIENT INFORMATION
ZIOPTAN® (zye OP tan)
(tafluprost ophthalmic solution) 0.0015%

Read this Patient Information before you start using ZIOPTAN® and each time you get a refill. There may be new information. This information does not take the place of talking to your doctor about your medical condition or your treatment.

What is ZIOPTAN®?

ZIOPTAN® is a prescription sterile eye drop solution. ZIOPTAN® is used to lower the pressure in the eye (intraocular pressure) in people with open-angle glaucoma or ocular hypertension when their eye pressure is too high. ZIOPTAN® belongs to a group of medicines called prostaglandin analogs.

ZIOPTAN® is not for use in children.

What should I tell my doctor before using ZIOPTAN®?

Before you use ZIOPTAN®, tell your doctor if you:

- have or have had eye problems including any surgery on your eye or eyes
- are using any other eye medicines
- have any other medical problems
- are pregnant or plan to become pregnant. It is not known if ZIOPTAN® will harm your unborn baby. You should use an effective method of birth control while you use ZIOPTAN®. If you become pregnant while using ZIOPTAN® talk to your doctor right away.
- are breastfeeding or plan to breastfeed. It is not known if ZIOPTAN® passes into your breast milk. Talk to your doctor about the best way to feed your baby if you use ZIOPTAN®.

Tell your doctor about all the medicines you take, including prescription and non-prescription medicines, vitamins, and herbal supplements.

Know the medicines you take. Keep a list of them to show your doctor and pharmacist when you get a new medicine.

How should I take ZIOPTAN®?

Read the Instructions for Use at the end of this Patient Information leaflet for additional instructions about the right way to use ZIOPTAN®.

- **Use 1 drop of ZIOPTAN® in your eye (or eyes) each evening.** Talk to your doctor or pharmacist if you are not sure how to use ZIOPTAN®.
- Your ZIOPTAN® may not work as well if you use it more than 1 time each evening.
- If you use other medicines in your eye, wait at least 5 minutes between using ZIOPTAN® and your other eye medicines.
- Use your ZIOPTAN® right away after opening. Each ZIOPTAN® single-use container is sterile and is to be used 1 time then thrown away. Do not save any ZIOPTAN® that may be left over after you use your medicine. Using ZIOPTAN® that is not sterile may cause other eye problems.

What are the possible side effects of ZIOPTAN®?

ZIOPTAN® may cause serious side effects including:

- **changes in the color of your eye (iris).** Your iris may become more brown in color while using ZIOPTAN®. This color change may not go away when you stop using ZIOPTAN®. If ZIOPTAN® is used in 1 eye only, the color of that eye may always be a different color from the color of your other eye.

- **darkening of the color of the skin around your eye (eyelid).** These skin changes usually go away when you stop using ZIOPTAN®.
- **increasing the length, thickness, color, or number of your eyelashes.** These eyelash changes usually go away when you stop using ZIOPTAN®.
- **hair growth on your eyelids.** This hair growth usually goes away when you stop using ZIOPTAN®.

The most common side effects of ZIOPTAN® include:

- redness, stinging or itching of your eye
- cataract formation
- dry eye
- eye pain
- blurred vision
- headache
- common cold
- cough
- urinary tract infection

Tell your doctor if you have any new eye problems while using ZIOPTAN® including:

- an eye injury
- an eye infection
- a sudden loss of vision
- eye surgery
- swelling and redness of and around your eye (conjunctivitis)
- problems with your eyelids

Additionally, the following side effects have been reported in general use:

- worsening of asthma
- shortness of breath

Tell your doctor if you have any other side effects that bother you.

These are not all the possible side effects of ZIOPTAN®. For more information, ask your doctor or pharmacist.

Call your doctor for medical advice about side effects. You may report side effects to FDA at 1-800-FDA-1088.

How should I store ZIOPTAN®?

Important Information for Mail-Order Patients:

Do not use if prescription is not received within two days of dispensing date.

Keep the foil pouches and ZIOPTAN® single-use containers dry.

Before opening the foil pouches:

- Store the unopened foil pouches in a refrigerator between 36°F to 46°F (2°C to 8°C).

- Do not open the pouch containing ZIOPTAN® until you are ready to use the eye drops.

After opening the foil pouch:

- Store the opened foil pouch at room temperature, between 68°F to 77°F (20°C to 25°C), for up to 30 days.
- Throw away all unused ZIOPTAN® single-use containers in the opened foil pouch after 30 days.
- Keep the ZIOPTAN® single-use containers in their original foil pouch.
- After opening the foil pouch, refrigeration is not required.

Keep ZIOPTAN® and all medicines out of the reach of children.

General information about the safe and effective use of ZIOPTAN®.

Do not use ZIOPTAN® for a condition for which it was not prescribed. Do not give ZIOPTAN® to other people, even if they have the same symptoms that you have. It may harm them.

This Patient Information leaflet summarizes the most important information about ZIOPTAN®. If you would like more information, talk with your doctor. You can ask your pharmacist or doctor for information about ZIOPTAN® that is written for health professionals.

What are the ingredients in ZIOPTAN®?

Active ingredients: tafluprost

Inactive ingredients: glycerol, sodium dihydrogen phosphate dihydrate, disodium edetate, and polysorbate 80, hydrochloric acid and/or sodium hydroxide, and water

Instructions for Use


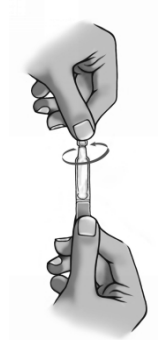


Read these Instructions for Use before using your ZIOPTAN® and each time you get a refill. There may be new information. This leaflet does not take the place of talking with your doctor about your medical condition or your treatment.

Important:

- **ZIOPTAN® is for the eye only. Do not swallow ZIOPTAN®.**
- ZIOPTAN® single-use containers are packaged in a foil pouch.
- **Do not** use the ZIOPTAN® single-use containers if the foil pouch is opened.
- Write down the date you open the foil pouch in the space provided on the pouch.

Every time you use ZIOPTAN:

Step 1. Wash your hands.	
Step 2. Take the strip of single-use containers from the foil pouch.	
Step 3. Pull off one single-use container from the strip.	
Step 4. Put the remaining strip of single-use containers back in the foil pouch and fold the edge to close the pouch.	

<p>Step 5. Hold the single-use container upright. Make sure that your ZIOPTAN® medicine is in the bottom part of the single-use container. See Figure A.</p>	 <p>Figure A</p>
<p>Step 6. Open the single-use container by twisting off the tab. See Figure B.</p>	 <p>Figure B</p>
<p>Step 7. Tilt your head backwards. If you are unable to tilt your head, lie down.</p> <p>Step 8. Place the tip of the single-use container close to your eye. Be careful not to touch your eye with the tip of the single-use container. See Figure C.</p>	 <p>Figure C</p>
<p>Step 9. Pull your lower eyelid downwards and look up.</p> <p>Step 10. Gently squeeze the container and let 1 drop of ZIOPTAN® fall into the space between your lower eyelid and your eye. If a drop misses your eye, try again. See Figure D.</p>	 <p>Figure D</p>

- If your doctor has told you to use ZIOPTAN® drops in both eyes, repeat Steps 7 to 10 for your other eye.
- There is enough ZIOPTAN® in one single-use container for both of your eyes.
- **Throw away the opened single-use container with any remaining ZIOPTAN® right away.**

This Patient Information and Instructions for Use have been approved by the U.S. Food and Drug Administration.

Rx



Distributed by: **Akorn, Inc.**

Manufactured for: **Oak Pharmaceuticals, Inc.**

Made in France

The ZIOPTAN trademark is owned by Merck Sharp & Dohme Corp. and is used under license.

Revised: 08/2014